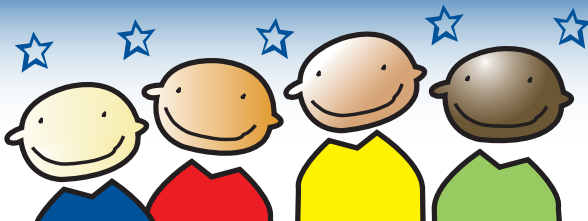


PLEASE JOIN US TO CELEBRATE!

Partnership for Children of Lincoln & Gaston Counties
Ribbon Cutting and Open House



Come visit our
new location and
tour our office!

Refreshments will
be available

Wednesday, August 11 • 11 am-12:30 pm
(actual ribbon cutting at 11:15)



The joint ribbon cutting will be done by the Gaston Regional Chamber and the Montcross Area Chamber of Commerce
120 Roechling Street • Dallas, NC 28034 • 704-922-0900

Partnership for Children

120 Roechling Street,
Dallas, NC 28034
Phone: 704-922-0900
Fax 704-922-0996

Directions:

Roechling Street is located on 321 N, from I-85 South take exit 17 for US-321/US-321 N toward Gastonia/Lincolnton, turn left at US-321 N/N Chester Street. The building is located on the right after Tommy's Drive in, 2708 Gastonia Dallas Highway.

From Lincolnton:

Take US-321 S toward Gastonia, turn left at Roechling Street before you reach the I-85 intersection. The Roechling building is on the hill.

facebook

www.facebook.com/pfclg
www.pfclg.com

